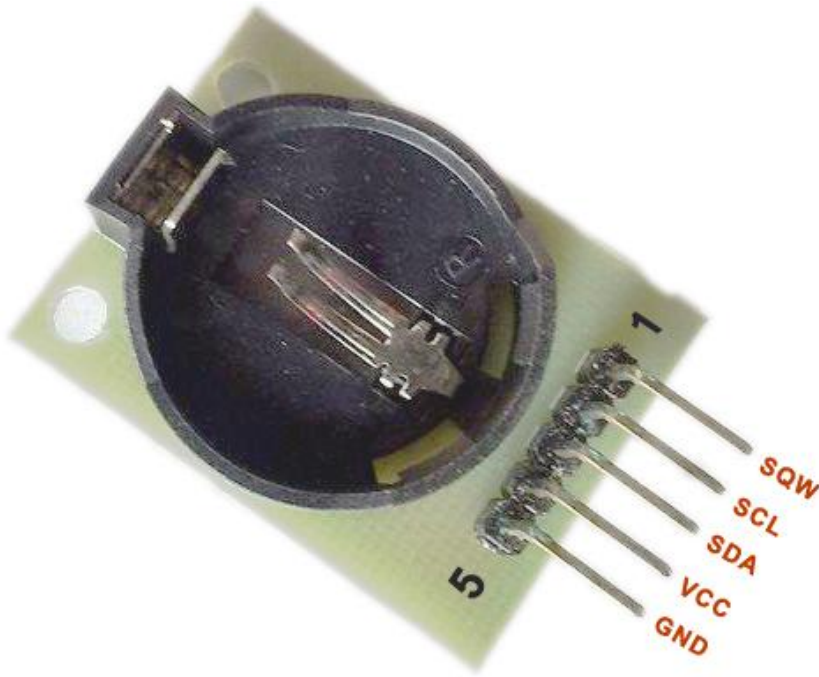


DS1307-RTC-Module MANUAL



PIN DESCRIPTION

1. SQW/OUT

Square Wave Output Pin. When enabled, the SQWE bit set to 1, the SQW pin outputs one of four square-wave frequencies (1Hz, 4 kHz, 8 kHz, and 32 kHz). The SQW pin is open drain and connected with 4K7 ohm pull-up resistor.

2. SCL

Serial Clock Input. SCL is the clock input for the I²C interface and is used to synchronize data movement on the serial interface. The pull-up voltage can be up to 5.5V regardless of the voltage on VCC.

3. SDA

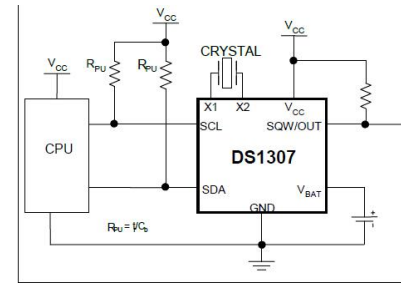
Serial Data Input and Output. SDA is the data input/output for the I²C serial interface. The SDA pin is open drain and requires an external pull-up resistor. The pull-up voltage can be up to 5.5V regardless of the voltage on VCC.

4. VCC

5V DC Supply voltage input for Module. When voltage is applied within normal limits, the device is fully accessible and data can be written and read.

5. GND: System Ground

TYPICAL OPERATING CIRCUIT



- Real-Time Clock Counts Seconds, Minutes, Hours, Date of the Month, Month, Day of the Week, and Year with Leap-Year All pull-up Resistors are 4K7 ohm.
- 56-Byte, Battery-Backed, General-Purpose RAM with Unlimited Writes
- Programmable Square-Wave Output Signal
- I²C Serial Interface